

# EZ FLEX LIGHTWEIGHT WRESTLING MATS

- One-person set up and break down.
- Lightweight and portable.
- Five-Year Limited Warranty.
- Meets ASTM impact protection standards.
- Built-in antimicrobial protection.

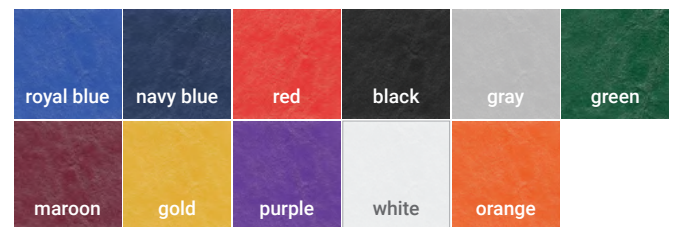
## SPECIFICATIONS

<b>Foam Type</b>	Cross-Linked Polyethylene
<b>Foam Density</b>	2.2 lbs
<b>Mat Thicknesses</b>	1-5/8", 2" (5/8" and 1-1/4" also available)
<b>Vinyl Weight</b>	24 oz.
<b>Standard Sizes</b>	42' x 42', 42' x 40', 42' x 38', 36' x 36', 30' x 30', 24' x 24', 18' x 18'
<b>Mat Colors</b>	black, gold, green, gray, maroon, navy blue, purple, red, royal blue, white, orange
<b>Maximum Width</b>	6' per mat section
<b>Maximum Length</b>	130' per mat section
<b>Weight</b>	116 lbs (6' x 42' x 1-5/8" mat section)
<b>Warranty</b>	Five-Year Limited

### Custom Artwork Options:

Hand-painted or airbrushed logos, any size.  
Lettering in your choice of font.  
Pantone color matching available.

### Mat Colors:



Official Mat  
of the

